

Custom Crew Shirts



C
U
S
T
O
M

Our Custom Crew Shirts are the perfect choice for crews looking for the professional racing crew shirt. They are cool, light weight, comfortable to wear and easy to care for. They are machine washable and can be worn without ironing.

We chose a high-thread-count blended poplin fabric, 65%polyester/35%cotton, which makes the shirts long lasting and tough enough for race mechanics. We also have 100% pima cotton fabric as well as mid-weight poplins available for crews that need the comfort of cotton or the additional crisp look of the heavier weight shirts. Our fabric is available in more than 40 colors so we can coordinate with your car and sponsor colors.

We cut our Custom Crew Shirts wide across the shoulders and long in the tail so working crews have the room they need to work effectively in their shirts. We use 7 buttons to close the fronts so there are no gaps. And we use Velcro to close the shirts under the embroidery when the front is embroidered, so the logo will match properly. Custom Crew Shirts are available in sizes Toddler 2 through 4XL

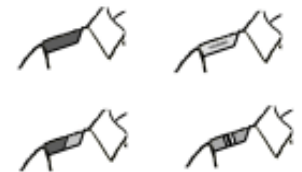
When you choose a Custom Crew Shirt from Fox Fabrique, you have lots of options to structure the shirt especially for you.

Pockets: you can choose Patch pockets, Patch pockets with flaps (with or without buttons), Inband pockets (pocket is hidden behind the seam) or Welted pockets



Collars: choose same color collar and stand; contrasting collar and stand; or button-downs collars

Shoulders: choose plain epaulets, epaulets with embroidery, epaulets with stripes, or two color epaulets



Sleeve Trim: choose regular hemmed sleeves, contrasting sleeve bands, sleeve bands with one or more stripes, plain hem with stripe, matching center band

CenterBand: choose the width that works best for your design - we recommend 5" because it is the depth of the patch pocket, or 3" because it is larger than a stripe and it makes a definite color statement



19564 Eighth Street East Sonoma Ca 95476 707-938-8838 fax 707-935-0481
email: kdowns@foxfabrique.com website: www.foxfabrique.com



Custom Crew Shirts

Made to your order using your own design -
or let us design your shirt for you

C
U
S
T
O
M

Remember - the photos are just examples so you can see how shirts get more complicated. Let your imagination soar!

The Pro *The business professional look with the Racer's flare*

- 1 color
- contrasting bands at sleeves, collars, epaulets
- Patch or welted pocket



• **Stage 1** *The classic racing look*

- 2 or 3 colors
- Contrasting bands at center and sleeves
- 1 or 2 color collar
- Patch pocket

Stage 2 *A more complex design with extra stripes and match directions*

- All stage 1 features
- Diagonal fronts/back
- Shoulder tabs or epaulets
- Additional stripe at sleeve and centerband



Stage 3 *All the bells and whistles*

- All stage 1 and 2 features
- V-fronts/back
- Multiple stripes
- Button-down collar
- Embroidered split front

The Winner's Circle *Whatever you can imagine*

- Complex designs: circles, roads, zigzags
- Patterning charges may apply

19564 Eighth Street East Sonoma Ca 95476 707-938-8838 fax 707-935-0481
email: kdowns@foxfabrique.com website: www.foxfabrique.com



Custom Crew Shirts

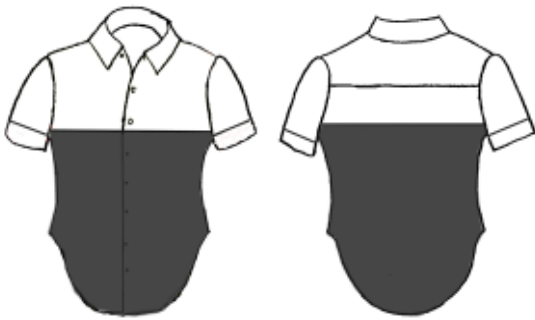


C
U
S
T
O
M

Shirt Styles: choose the style that works with your sponsor and your car - let your imagination be your guide. On the previous page we've shown several basic styles; a basic shirt with options added to show how costs increase. Below and on the next page are sketches of standard styles we use most frequently. Use these styles as jumping off points for your design. A blank form is also included for you to sketch on.

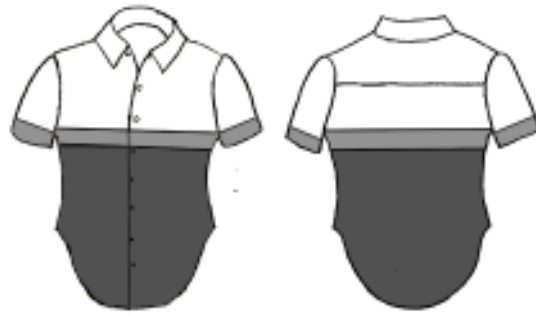
Stage 1 Shirts

Our simplest designs, with minimal color changes, to keep the cost down.

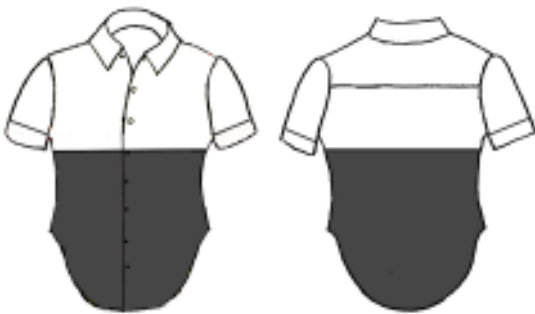


Style 1A, High Center Band. Color changes at top of pocket line

Style 1A1, High Center Band with stripe (not shown). 3" stripe between top and bottom fabric. Color changes at top of pocket and 3" down



Style 1C, Low Center Band with stripe. 3" stripe between top and bottom fabric. Color changes at bottom of pocket and 3" up.



Style 1B, Low Center Band. Color changes at bottom of pocket line



Style 1D, Center Band with stripe. 5" stripe between top and bottom fabrics. Color changes at pocket line and 5" down.



19564 Eighth Street East Sonoma Ca 95476 707-938-8838 fax 707-935-0481
email: kdowns@foxfabrique.com website: www.foxfabrique.com



Custom Crew Shirts

C
U
S
T
O
M

Stage 2 Shirts

More complex styles requiring more precision in matches, and increasing costs.



Style 2 E, Diagonal with stripe. Color changes at the bottom of the armhol and goes to slightly above the waist. Stripe is added above the color change.

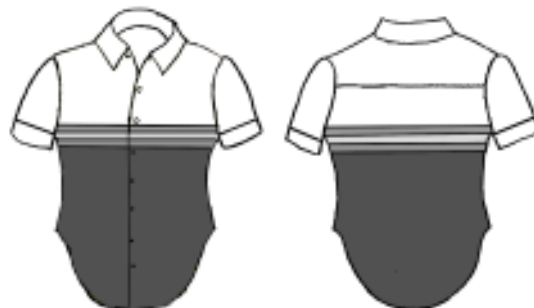


Style 2F, Diagonal with center band. 3" stripe is inserted between top and bottom fabrics.

We also have pullover shirts, vented backs, hidden buttons, and stand up collars. If you want a feature you don't see, just ask us.

Stage 3 Shirts

The most complex styles, with lots of complex matches.



Style 3K, Low center band with multi-stripe. Color changes at bottom of pocket line. Stripes are 1" wide. We can also do varying sizes of stripes.



Style 3M, V Stripe. Stripe comes to a V at bottom of pocket line. 3" stripe is added between top and bottom fabrics.

Alternate back has 3" stripe straight across the back

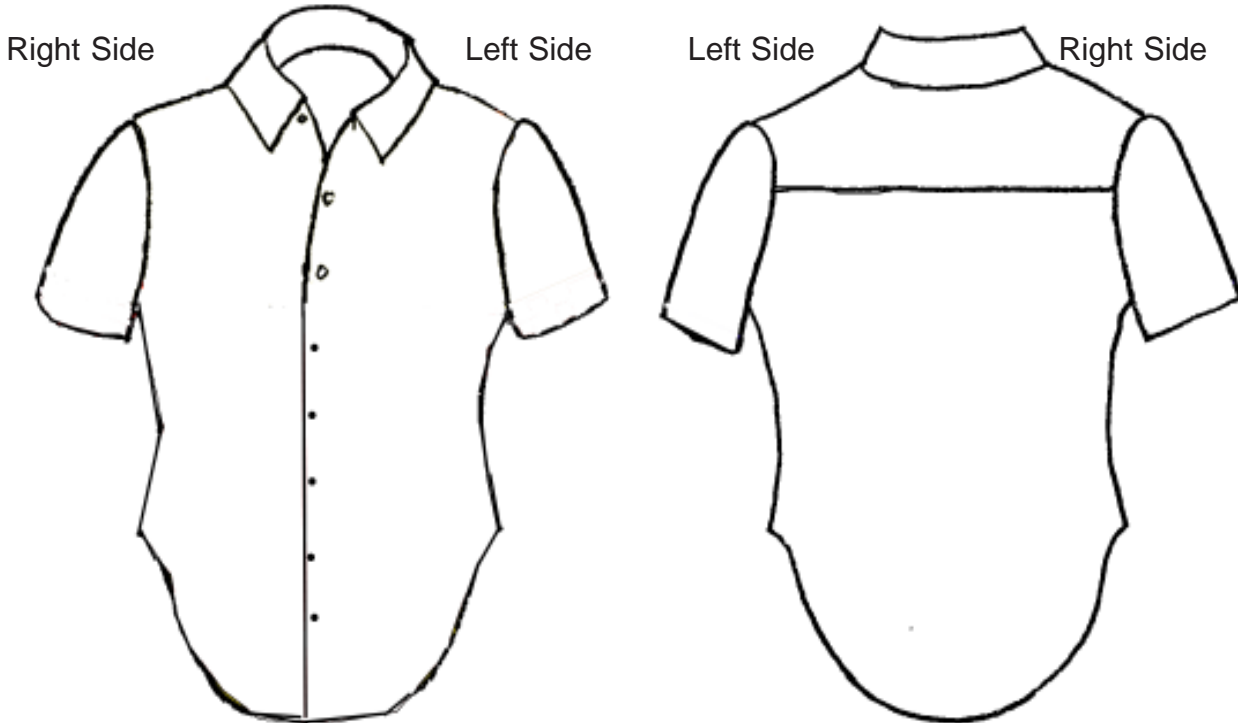


Custom Design Sketch



C Sketch your custom shirt design here:

U
S
T
O
M



Circle the options you want included:

POCKET

- Patch Pocket
- Hidden Pocket
- Welt Pocket
- Pocket Flaps

COLLAR

- Button-down
- Tailored
- Contrast Collar Stand
- Banded Collar

SLEEVE

- Contrast Band at edge
- Regular Hem
- Match Center Band

SHOULDER

- Epaulets
- Tabs

BOTTOM

- Shaped
- Square

Fabric Choices:

Ultima Poplin

65% polyester 35% cotton
light weight poplin for cool comfort
high thread count for durability
machine washable; wrinkle resistant

Maxima Poplin

65% polyester 35% cotton
mid-weight poplin
high thread count for durability
machine washable; wrinkle resistant

Also Available

100% Pima Cotton
100% Cotton Brushed Twill

Fabric Colors (not all colors are available in all fabrics):

Beauty	Black	Kelly Green	Navy	Red	A.Turquoise	Surf Turquoise
Bright Pink	Corn Yellow	Orange	Royal	White	Wine	Polly Red
Bright Yellow	Gold	Magenta	Purple	Sky Blue	Wisteria	P178 Blue
Candy Blue	Grey	Medium Pink	Red	Teal		Lime Pistachio



19564 Eighth Street East Sonoma Ca 95476 707-938-8838 fax 707-935-0481
email: kdowns@foxfabrique.com website: www.foxfabrique.com



Crew Uniform Size Guides

Size Reference Guide

Custom Crew Shirts & Jackets

In general you can use the size you usually buy in polos, sweats or tees; however our size guidelines are listed below for your reference:

Shirt Size	Neck	Chest	Sleeve length
XS		30 - 32	32
S	14 - 14 1/2	34 - 36	33
M	15 - 15 1/2	38 - 40	34
LG	16 - 16 1/2	42 - 44	35
XL	17 - 17 1/2	46 - 48	36
XXL	18 - 18 1/2	50 - 52	37
XXXL			

Custom Crew Pants - Men

Please note custom crew pants are NOT shrink to fit.

Waist Size	28	30	32	34	36	38	40	42	44	46
Hips	37	40	41	42	44-1/2	46	48	49-7/8	52-3/4	54-1/2
Girth	23	24	25	26-1/2	27	28-3/4	29-1/2	30-7/8	32-1/2	31-1/4
Thigh	21	22	22-3/4	23-1/2	25	26	26-3/4	28-3/4	29-1/2	31-1/2

Please provide your inseam measurements.

Custom Crew Pants - Women

Please note custom crew pants are NOT shrink to fit.

Size	6	8	10	12	14	16
Waist	27	28	29	30	31-1/2	33
Hips	35	36	37	38	39-1/2	41
Girth	24-1/4	24-3/4	25-1/4	25-3/4	26-1/2	27-1/4

Please provide your inseam measurements.

Definitions:

Waist: Men - please give us the measurement where you want the waistband of your pants to be. And tell us where that is in relation to your actual waist (where you put your hands when you put your hands on your waist)

Hips: Greatest circumference around the buttocks. Ladies, this is generally 7 to 9 inches from your waist. Men, please let us know how far your hip measurement is from your waist measurement.

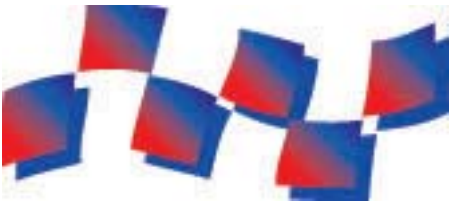
Girth: Measure from the front of your waistband through the crotch to back of waistband

Thigh: 3" below your crotch

19564 Eighth Street East Sonoma Ca 95476 707-938-8838 fax 707-935-0481

email: kdowns@foxfabrique.com website: www.foxfabrique.com





TERMS AND CONDITIONS

Our Fox Fabrique manufactured garments are of the highest quality. We have made every effort to control and minimize shrinkage, color fastness, and shading variations. However, it is impossible to guarantee against any of these variables. Please follow care instructions provided by Fox Fabrique, or sewn inside the garment.

ORDERS

Orders can be placed over the phone, by fax, by e-mail, through the mail and in person. Written confirmation of verbal orders may be required.

HOURS

We are open during standard West Coast business hours of 8:00am to 5:00pm Monday through Friday. Other hours and weekend by arrangement.

TERMS

A 50% deposit is required on all custom manufactured orders as well as full payment of preparation charges for artwork, and/or embroidery digitizing as required. Orders will be shipped COD CERTIFIED FUNDS for the balance due. Deposits are nonrefundable once the work has started on your order; any charges incurred greater than the deposit amount will be billed to the customer.

MINIMUMS

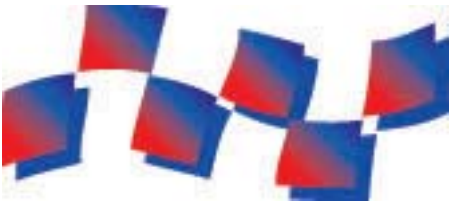
Minimum order on any item is 1 piece. Prices may be affected by quantity.

DELIVERY

Orders are scheduled on an as-ordered and as-needed basis. Before we can schedule your order, we must have written order confirmation, design and digitizing approvals, authorization for duplication of trademarked designs, and have received your deposit. A rush order surcharge may be applied to orders required faster than our quoted delivery time. Dye-sublimation orders are subject to delays in processing from our printers which is beyond our control.

SAMPLES

We will send sample garments to customers at their request to try for size prior to ordering. Customer is responsible for return shipment of items in the same condition in which they were received **within 10 days**. Customer will be billed full retail cost of any items not returned in the specified time, as well as for any cleaning/repair costs necessary. Dirty, soiled worn garments will not be accepted as returns under any conditions. Merchandise must be clean and in original packaging. A refundable deposit may be required.



COLOR MATCH

We cannot guarantee exact color match across dye lots or between same colors different fabrics. We will attempt to match your order as closely as possible. Please request sample swatches when exact color is critical.

EMBROIDERY

An embroidery file digitized specifically for embroidery is required to reproduce custom graphics and logos. Lead-time is usually 1 week to 10 days. Rush service may be available at an extra charge. We require authorization from license holders to use any registered trademark. A programming fee may apply for designs requiring programming instead of tapes.

SHIPPING

Orders are shipped FedEx air unless other arrangements are made.

RETURNS

Shortages and defects must be reported to Fox Fabrique within 5 days of receipt of goods. Merchandise may be returned for manufacturing defects only. Permission from Fox Fabrique is required. Personalized merchandise is not returnable or exchangeable.

CREDIT CARDS

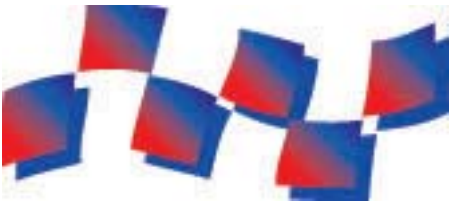
We accept MasterCard, VISA, Discover, and American Express cards.

CUSTOMER'S GARMENTS

Garments provided to us for embroidery or sewing must be clean. Any costs incurred by Fox Fabrique to clean garments will be charged to the customer. Fox Fabrique is not responsible for any damage to customer's garments that occurs through normal processing.

LIABILITY

Our products offer absolutely no protection against fire and we assume no liability for any injury incurred while wearing or carrying them.



Fox Fabrique has been designing and making crew shirts for the competition market place, both automotive racing and tournament fishing, for 20 years. Mike Downs is an active racer so all our products are thoroughly track tested before we sell them. And after 20 years we have a lot of customers who have race-tested our clothes too.

We have found that the shirts easily last a couple of seasons, and we have customers who have worn them for 6 years or more. We have many customers who have been buying our race shirts for at least 10 years, because they are comfortable to wear and look good for a long time. Their crew guys like the shirts so they wear them happily.

If the shirts are not heavily embroidered, they can be washed and dried in your home dryer. If you remove them from the dryer promptly and hang them, they rarely need ironing. If they are heavily embroidered, or if they sit in the dryer, touching up with an iron will make them look better.

The fabric will eventually fade in the sun, all fabric does. The colors won't bleed, so white and red shirts won't turn pink. In general bleeding can happen if wet shirts are left in a heap - and bleeding can come from either the fabric or the embroidery thread. For that reason we recommend not leaving the shirts wet in the washer. If they are wet, hang them so they don't bleed or mildew.

Because we make our shirts as ordered, there are many features that are available in our shirts that don't show in the catalog. Notably we can make pullover shirts, vented backs, hidden plackets, and stand up collars. Just let us know what you'd like to see on your shirts. If you have questions about our shirts, or any other product, please give me a call.

Kathy



19564 Eighth Street East Sonoma Ca 95476 707-938-8838 fax 707-935-0481
email: kdowns@foxfabrique.com website: www.foxfabrique.com